

Source: Leece-Neville Heavy Duty Systems Division - Arcade, NY USA  
 Date: September 18, 2018  
 Bulletin No: TSB-1171  
 Models: 24V M128R Starters  
 Subject: Wiring / Terminal Identification

**TSB will explain the wiring, terminal identifications and locations compared to a Delco 42MT/ 50MT starters.**

Image of M128 starter used in this document does not represent all models. Relay locations can be in different locations.

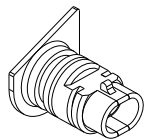
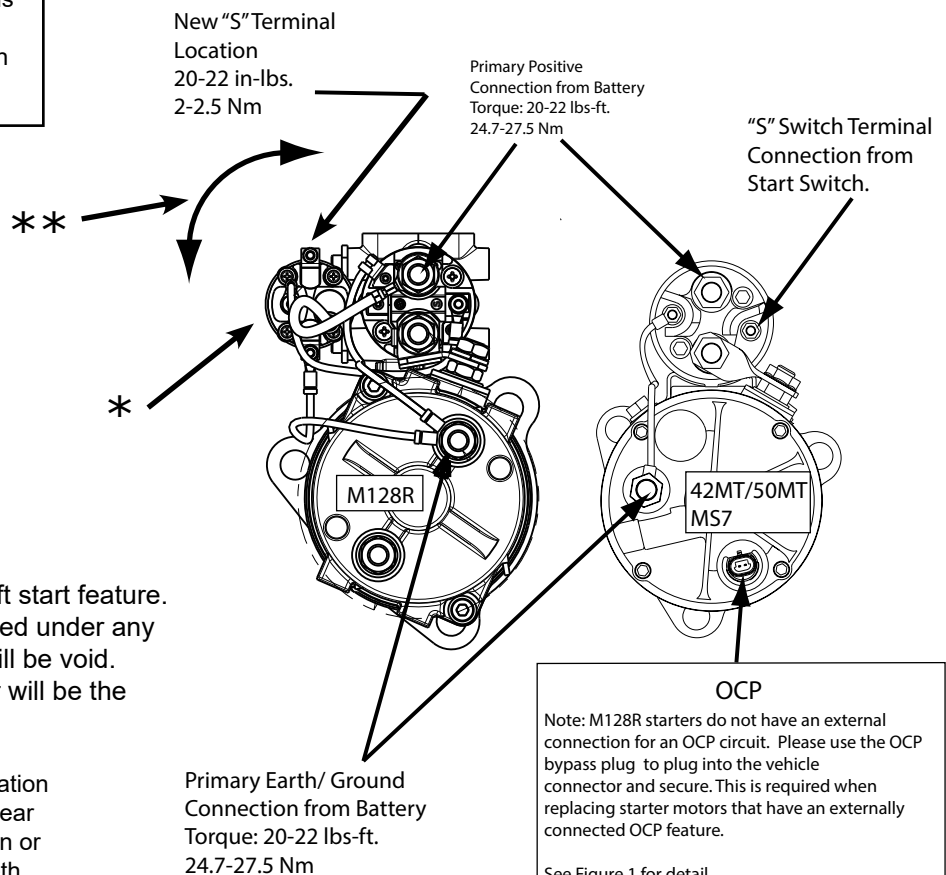


Fig 1  
M264105399S  
OCP Bypass Connector

\* Note:  
Relay is part of the starter soft start feature. This relay must not be removed under any circumstances as warranty will be void. Severe damage to the starter will be the result.

To insure reliable long term operation it is critical that the vehicle ring gear be inspected for excessively worn or frayed edges of the ring gear teeth that may prevent engagement of the starter pinion.  
Replace ring gear if necessary.



OCP  
 Note: M128R starters do not have an external connection for an OCP circuit. Please use the OCP bypass plug to plug into the vehicle connector and secure. This is required when replacing starter motors that have an externally connected OCP feature.  
 See Figure 1 for detail.

\*\* It may be necessary to locate the relay to another position to avoid a clearance issue on the vehicle.

**NOTE:** For starter motor safety precautions please reference TSB-1166.

Important: The information contained in this bulletin is intended for use by trained, professional technicians who have the proper tools, equipment, and training to perform the required maintenance described above. This information is NOT intended for 'do-it-yourselfers', and you should not assume that this information applies to your equipment. If you have any questions regarding this information please visit our website at [www.prestolite.com](http://www.prestolite.com), or contact our technical service department at: 844-492-4062.