

**Prestolite**  
*electric*

**Leece-Neville**  
HEAVY DUTY SYSTEMS

# SCHOOL BUS

---

## TECHNOLOGY GUIDE

---

### Severe Duty Alternators

12V, 210 to 420 Amps



### Severe Duty Starters

12V, 5kW



[IdleProExtreme.com](http://IdleProExtreme.com)

[PowerProStarters.com](http://PowerProStarters.com)



# Spec It Right. Choose Leece-Neville.



## Industry-Best Output at Low Engine Speeds

The Leece-Neville® IdlePro® and IdlePro Extreme® heavy duty alternators for school bus applications were engineered to deliver industry-best output at low engine speeds, a vital feature for applications that spend most of their working life at low RPM and powering more than the usual amount of electrical draws.

### **We Know You Can't Afford Power Loss**

School bus operation typically combines normal vehicle operation with several energy draws – often at idle – that range from lights to air conditioning to heating and more. Avoiding downtime is critical and IdlePro and IdlePro Extreme alternators for school buses offer advanced engineering enhancements to deliver power and performance when it's needed most.

### **No Throttle Back Regulator Needed**

Some alternators on the market today will suffer a reduction in output as the unit gets hotter. This feature, called a throttle back regulator, helps to protect the alternator at the expense of related electrical system components. IdlePro series units do not have this feature and were carefully spec'd to survive high-heat environments, providing full output at high-operating temps and helping to protect related system components.

### **Isolated Ground Technology**

Drawing on Prestolite® Electric's global technology envelope, each IdlePro and IdlePro



Extreme alternator has an extra necessity built right in: Isolated Ground Technology. This innovative feature protects the engine from potentially severe electrolytic damage caused by stray voltage.

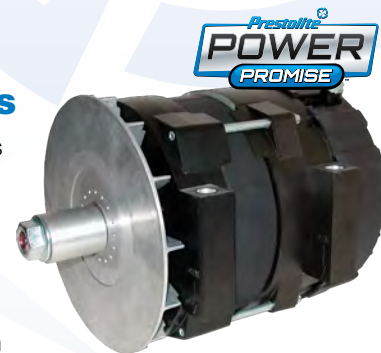
### **IdlePro Alternators**

- Dual internal fan design maintains optimum bearing temp during operation & minimized heat damage for longer service life
- Minimum of 63% output of unit's rated maximum output at engine idle speed\*
- Remote sense capable to return battery to full charge state between stops and reduce overall charging time
- Ideal for use in extreme- and high-temp environments
- eCoated & heavy duty housing for improved corrosion and vibration resistance
- 12V: 170-, 190-, 210-, 240-amp outputs



### **IdlePro Extreme Alternators**

- Premium, best-in-class brushless design – drops weight and size pitfalls over conventional units without jeopardizing performance benefits
- Auxiliary draft cooling design controls temp of the front bearing to maintain a 10-degree cooler temp as compared to traditional designs
- Minimum of 90% output of unit's rated maximum output (200+ amps) at engine idle speed\*
- Dual cable terminals (B+/B-) positioned laterally and axially
- Remote sense capable to return battery to full charge state between stops and reduce overall charging time
- Ideal for use in extreme- and high-temp environments
- eCoated & heavy duty housing for improved corrosion and vibration resistance
- 12V: 220-, 240-, 280-, 325-, 350-, 420-amp outputs



Assembled In  
**AMERICA**

\*Certain applications





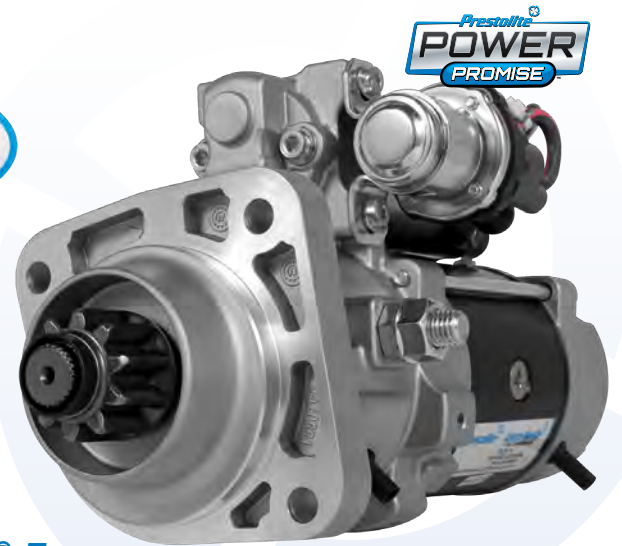
Leece-Neville® PowerPro Extreme® and IdlePro® series starters and alternators deliver reliability, quality and performance to school bus applications. For decades, Leece-Neville school bus products have set the standard for innovation, delivering industry-best output at low engine speeds in this high stop-and-go market. Ideal for Type A and C buses, Leece-Neville products – engineered specifically for these applications – improve overall school bus electrical performance, delivering ideal outputs whether on-the-road or at idle.

**High Torque,  
High Power:  
Any Time,  
Anywhere**

When you need reliable power for your school bus application, choose Leece-Neville PowerPro Extreme starters.

## Reliable. Powerful. Lightweight.

Leece-Neville PowerPro Extreme® school bus starters offer unmatched reliability and performance in a space-saving package. These advanced starters integrate the latest technologies available to provide reliable performance at each and every start, including an electrical soft-start relay that allows the pinion to properly engage the ring gear before cranking.



### PowerPro Extreme® 5

for medium and heavy duty diesel engines up to 10L

- Industry-leading performance in 6- to 10-liter engines
- Sealed, nose-less design protects against dust, oil and other contaminants
- Planetary gear reduction design
- Integral Magnetic Switch technology eliminates voltage drop
- Soft start relay technology prevents ring gear damage
- Weighs 21.5 pounds (9.8kg)
- All-new, no-core

\*\*Check with your Prestolite representative for specific warranty offer

## In It for the Long Haul – The Industry's Best Warranty

Available on qualifying IdlePro® and IdlePro Extreme® alternators and PowerPro Extreme 5 starters, the Prestolite Power Promise delivers an industry best warranty to school bus fleets. Each qualifying Leece-Neville IdlePro and IdlePro Extreme alternator and PowerPro Extreme 5 starter now carries a complete 3- or 4-year/unlimited mileage warranty for school bus applications and an extended list of available qualifying failure claims, including manufacturing defects; premature component failure; failure due to a variety of factors such as corrosion, rust, heat and vibration; and additional covered issues. Contact us today to learn more!



# Safety Inspection Requirements

Department of Transportation pre-trip vehicle inspections are required, and critical checks in the inspection include bus lights and heating and air conditioning systems. Most of these systems are used constantly, particularly when the engine is idling, requiring a large amount of power from the alternator. IdlePro and IdlePro Extreme series alternators were engineered to deliver the output school buses require, providing enough amperage to meet the demands of the electrical system loads and having the capacity to provide timely replenishment of the battery.

## Reduce Your SKUs Through Versatile IdlePro & PowerPro Extreme Product Lines

Each Leece-Neville IdlePro/IdlePro Extreme and PowerPro Extreme unit is designed specifically to allow for part number consolidation and ease installation/fitment concerns through rotatable flanges and more to offer a full range of school bus application coverage through a smaller base of part numbers. Improve your inventory turns, ease installation concerns and offer the industry-leading starter and alternator coverage. Only from Leece-Neville.

For More Information Visit:

[IdleProExtreme.com](http://IdleProExtreme.com)

[PowerProStarters.com](http://PowerProStarters.com)

Contact Your Sales Representative Today!

7585 Empire Drive • Florence, KY 41042 • (800) 354-0560