



**Prestolite**  
electric



**Leece-Neville**  
HEAVY DUTY SYSTEMS

# EMERGENCY VEHICLE

---

## TECHNOLOGY GUIDE

---

**Heavy Duty Alternators**  
240, 280, 350 and 420 Amps

**Heavy Duty Starters**  
12V, 5kW and 7kW







# When Every Second Counts, Count on Leece-Neville



## Best-in-Class Output

IdlePro® and IdlePro Extreme® alternators from Leece-Neville Heavy Duty Systems are engineered to deliver industry-leading output at low engine speeds, which is vital for vehicles that do most of their work at low RPMs and power larger-than-usual electrical draws.

### All Systems Go

Emergency vehicles are required to power complex – and critical – electrical systems, even when the engine is idling, and must also be able to meet demanding voltage requirements in extreme conditions. IdlePro and IdlePro Extreme alternators are up to the task, offering efficiency, power and protection that will keep everything running.

### Isolated Ground Technology

Drawing on Prestolite Electric's global technology portfolio, each IdlePro and IdlePro



Extreme alternator has an extra necessity built right in: Isolated Ground Technology. This innovative feature protects the engine from potentially severe electrolytic damage caused by stray voltage.

### Assembled In



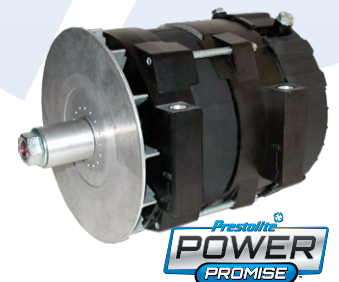
### IdlePro Alternators 240-Amp Output

- Dual internal fan design maintains optimum bearing temperatures during operation and minimizes heat damage for longer service life
- Premium brushed design provides durability for a wide range of operating conditions
- Minimum of 63% output of unit's rated maximum output at engine idle speed\* provides efficient, battery-saving performance
- Remote sense capability reduces battery charge time and returns battery to a full charge between stops
- eCoating provides superior corrosion resistance
- Heavy duty housing improves performance in common extreme operating environments



### IdlePro Extreme Alternators 280-, 350- and 420-Amp Outputs

- Auxiliary draft cooling design controls temperature of the front bearing – 10 degrees cooler than traditional designs\*
- Minimum of 90% output of unit's rated maximum output at engine idle speed\* provides efficient, battery-saving performance
- Provides best-in-class brushless performance without the weight and size downfalls of conventional alternators
- Dual cable terminals (B+/B-) positioned laterally and axially extend coverage and convenience
- Remote sense capability reduces battery charge time and returns battery to a full charge between stops
- eCoating provides superior corrosion resistance
- Heavy duty housing improves performance in common extreme operating environments



\* Certain applications

\*\* Warranty limited to qualifying units only; Only applicable in the U.S., Canada and Mexico; Check with your representative for complete details



## In It for the Long Haul – The Industry's Best Warranty

Leece-Neville IdlePro® and PowerPro® series alternators and starters deliver quality, performance, and most importantly, unmatched reliability for emergency vehicles. Including world-class engineering and technology, these products are specifically designed to provide power in even the most demanding conditions, all while reducing operating costs and maintenance-related downtime. When response time is critical, these alternators and starters are built to help emergency vehicles operate consistently and efficiently.

## Reliability for Every Start

Leece-Neville PowerPro 7 and PowerPro Extreme® 5 starters provide consistent starting performance for heavy duty vehicle engines, regardless of conditions. Built to exacting standards, these starters will help minimize your operating costs and maximize your uptime.



### PowerPro 7 Starters

PowerPro 7 high-torque starters integrate premium technologies and a powerful, robust gear reduction design to offer dependable starting power in a space-saving package. These starters offer superior performance in heavy duty engines up to 16L.

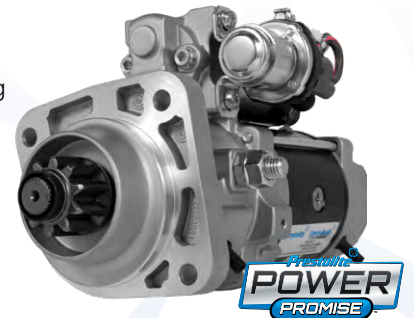
- 12V 7kW starting power
- Weighs less than 30 lbs. (13.6 kg)
- Efficient armature design reduces power loss and provides higher reliability
- Heavy duty brush plate improves performance through increased surface area and better conductivity
- High power rating delivers a faster, more efficient crank and source of power
- Soft start relay helps eliminate ring gear damage
- Integral magnetic switch (IMS) helps eliminate voltage drop issues by minimizing wiring between the relay and solenoid
- Sealed nose housing adds service life and protects internal components
- Overcrank protection (OCP) protects the motor in any operating condition (optional)
- Performance eCoating provides superior corrosion resistance\*
- Rotatable flange provides flexibility to reduce inventory\*
- 1-year/150,000 mile warranty or 3-year/350,000 warranty with OCP\*\*



### PowerPro Extreme 5 Starters

High-torque, high-efficiency PowerPro Extreme 5 starters provide coverage for medium duty 6L to 10L engines. Each starter meets major OE engine manufacturer testing specifications, offering a simplified preventative maintenance program and a significant increase in vehicle uptime.

- 12V 5kW starting power
- Weighs 21.5 lbs. (9.8 kg)
- Efficient armature design reduces power losses and provides higher reliability
- Soft start relay ensures positive pinion engagement with flywheel and reduces potential for ring gear damage
- Integral magnetic switch (IMS) helps eliminate voltage drop issues by minimizing wiring between the relay and solenoid
- Fully sealed, noseless design adds service life and protects internal components
- Emergency Truck Applications, 2-Year/Unlimited Mileage



\* Not available for all models \*\* Check with your representative for complete details

Available on qualifying IdlePro® and IdlePro Extreme® alternators and PowerPro Extreme® 5 starters, the Prestolite Power Promise delivers an industry best warranty to fire truck and emergency vehicle fleets. Each qualifying Leece-Neville IdlePro and IdlePro Extreme alternator and PowerPro Extreme 5 starter now carries a complete 2-, 3- or 4-year/unlimited mileage warranty and an extended list of available qualifying failure claims, including manufacturing defects; premature component failure; failure due to a variety of factors such as corrosion, rust, heat and vibration; and additional covered issues. Contact us today to learn more!



# Find the Parts You're Looking for Right Now!

Leece-Neville and Prestolite Electric alternators and starters can be found quickly and easily via the Prestolite Electric VIN lookup application at [www.peivinlookup.com](http://www.peivinlookup.com). Use the flexible search function to find parts by number, description, VIN number or brand, and further narrow your search with product attributes including voltage, kW rating, mount type, pinion pitch, amperage, polarity and more.

## Reduce Your SKUs through Versatile IdlePro & PowerPro Product Lines

Each Leece-Neville IdlePro and PowerPro unit is designed specifically to allow for part number consolidation and to ease installation/fitment concerns through rotatable flanges and more to offer a full range of vehicle application coverage through a smaller base of part numbers. Improve your inventory turns, ease installation concerns and offer industry-leading coverage. Only from Leece-Neville.

For More Information Visit:



Contact Your Sales Representative Today!

7585 Empire Drive • Florence, KY 41042 • (800) 354-0560

Learn more  
@PrestoliteElectric

